



Pouch Tutorial

You will need:

- ▶ your stitched design
- ▶ some matching fabric for the lining
- ▶ some ribbon (2 x 50 cm)
- ▶ some matching beads

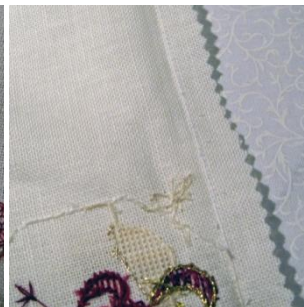
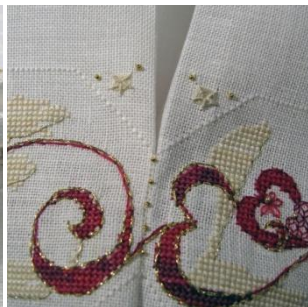
Step 1 : getting ready.



Iron your linen and lining fabric, and round up all the items you will need for this.
Watch out: make sure that you allow for enough fabric around your stitched design.

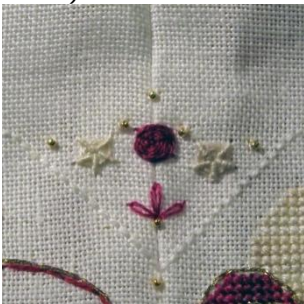
Allow at least an extra 1 cm around all the sides of both stitched designs, except for the top of the large design for which you will need to allow the same height as the design again, + 1 cm.

Step 2 : putting it together.



To start with, stitch up (using whip stitch***) the section where the octagonal shapes should meet up to form a tube. Don't forget to stitch little beads as you go along. Turn the tube inside out, and stitch up the

rest of the seam with a sewing machine (so the whole length of the tube is now stitched up).



Turn the tube the right way round again, and you can now stitch the few stitches that overlap the seam.

Cut the lining fabric to the same measurements as the stitched linen, and machine stitch the second tube along the side.

Pouch Tutorial



Tuck the lining tube inside the stitched one (right sides touching) and secure them together (aligning the side seams) with pins. Machine stitch both layers together, then trim off excess fabric with pinking

shears (about 1 cm away from the seam). Right side showing, press the 2 layers together to flatten the seam, and stitch both fabrics in place along the very edge, so as to give a neat finish to the top of your pouch.



With pins, plot the 4 corners of the square that we will use to line the bottom of the pouch. You can use the stitched square to guide you as to where the corners should be, but take care not to pin both layers together.

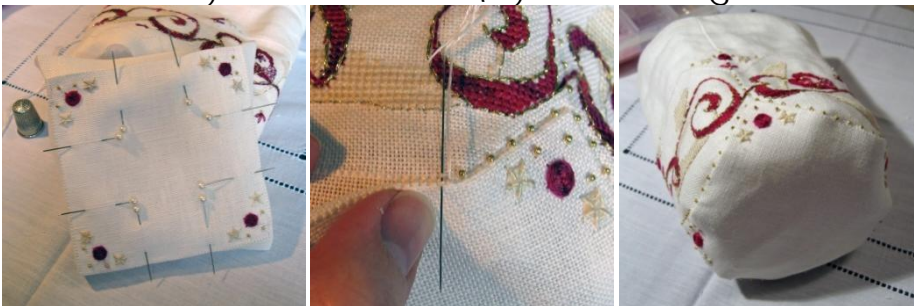
Repeat this for the lower angles of the octagons on the pouch. Again, take care not to pin both layers together.



Place the lining square in position (using the pins to guide you) and hold it in place with pins.

Watch out: make sure that you work on the right side of the fabric.

Hand stitch the bottom of the pouch. I chose to stitch it with a white backstitch for a discrete finish, but you could also use a fancier stitch and opt for a contrasting colour.



On the stitched square, using pins, plot the places where the angles of the octagons should meet with the bottom square.

Whip stitch** the bottom square of linen to the rest of the pouch using little beads to

dress the seam. Stitch all around the bottom.

Pouch Tutorial



Stitch some beads around the opening of the pouch. Put a pin where you're going to want to stitch beads to hold your ribbon in place. I opted for 8 of them, directly above the 8 top angles of the octagons. Stitch the

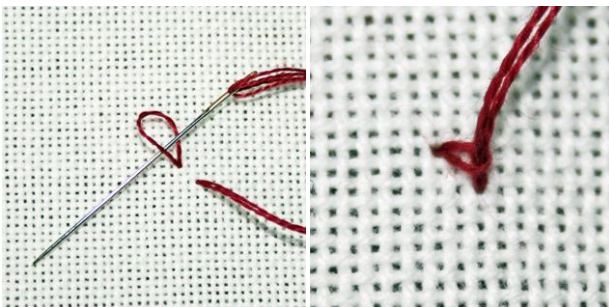
beads of your choice, making sure that your loops are wide enough for your ribbon.

Step 3 : adding the finishing touches.



String your ribbon through the loops, one in each direction, to create a drawstring system. Keep a loop of excess ribbon on opposite sides of the pouch (to make little handles), and fasten the loose ends together to the pouch using a sequin and a bead. Your pouch is finished!

Technical tips:



Start your first stitch, turn your fabric over so you're looking at the wrong side, and thread your needle through the loop to secure it. Pull to tighten (see the pictures above – note that the photos are showing the **wrong side** of the fabric).

* Loop Method:

Use this method when you need the start of a seam to be as "invisible" as possible.

Take a longer length of thread than usual, and double it up. Thread your needle so that the loop is at the bottom of your length of thread.



** Whip Stitch:

You can use this method to assemble 2 pieces of outlined fabric together. (The stitched pieces must have been outlined with backstitch prior to this.)

You can then stitch each pair of opposite backstitches together, as shown on the picture.

Pouch Tutorial

If you enjoyed stitching this scissor case, you may like the following designs:



Ref. LVD040-PCH



Ref. STR040-PCH

These designs, and many more, are available on

www.fabyreilly.com